



REGIONAL SPECIALISED METEOROLOGICAL CENTRE-TROPICAL CYCLONES, NEW DELHI  
TROPICAL CYCLONE ADVISORY BULLETIN NO. 30

FROM: RSMC –TROPICAL CYCLONES, NEW DELHI

TO: STORM WARNING CENTRE, NAYPYI TAW (MYANMAR)  
STORM WARNING CENTRE, BANGKOK (THAILAND)  
STORM WARNING CENTRE, COLOMBO (SRILANKA)  
STORM WARNING CENTRE, DHAKA (BANGLADESH)  
STORM WARNING CENTRE, KARACHI (PAKISTAN)  
METEOROLOGICAL OFFICE, MALE (MALDIVES)  
OMAN METEOROLOGICAL DEPARTMENT, MUSCAT (THROUGH RTH JEDDAH)  
YEMEN METEOROLOGICAL SERVICES, REPUBLIC OF YEMEN (THROUGH RTH JEDDAH)  
NATIONAL CENTRE FOR METEOROLOGY, UAE (THROUGH RTH JEDDAH)  
PRESIDENCY OF METEOROLOGY AND ENVIRONMENT, SAUDI ARABIA (THROUGH RTH JEDDAH)  
IRAN METEOROLOGICAL ORGANISATION, (THROUGH RTH JEDDAH)  
QATAR METEOROLOGICAL DEPARTMENT (THROUGH RTH JEDDAH)

TROPICAL CYCLONE ADVISORY NO. 30 FOR NORTH INDIAN OCEAN (THE BAY OF BENGAL AND ARABIAN SEA) VALID FOR NEXT 120 HOURS ISSUED AT 1600 UTC OF 18.05.2021 BASED ON 1500 UTC OF 18.05.2021.

**SUB: CYCLONIC STORM “TAUKTAE” (PRONOUNCED AS TAU’TE) WEAKENED INTO A DEEP DEPRESSION OVER GUJARAT REGION**

THE **SEVERE CYCLONIC STORM “TAUKTAE” (PRONOUNCED AS TAU’TE)** OVER GUJARAT REGION MOVED NORTH-NORTHEASTWARDS, WEAKENED INTO A **DEEP DEPRESSION** AT 1500 UTC OF 18<sup>TH</sup> MAY OVER GUJARAT REGION. AND LAY CENTERED AT 1500 UTC OVER GUJARAT REGION NEAR LATITUDE 23.6°N AND LONGITUDE 72.6°E, ABOUT 60 KM NORTH-NORTHEAST OF AHMEDABAD (42647).

IT IS VERY LIKELY TO MOVE NORTH-NORTHEASTWARDS AND WEAKEN GRADUALLY INTO A DEPRESSION DURING NEXT 12 HOURS. THE REMNANT OF THE SYSTEM IS VERY LIKELY TO MOVE FURTHER NORTHEASTWARDS ACROSS RAJASTHAN TO WEST UTTAR PRADESH DURING 19<sup>TH</sup> & 20<sup>TH</sup> MAY.

FORECAST TRACK AND INTENSITY ARE GIVEN IN THE FOLLOWING TABLE:

DATE/TIME(UTC)	POSITION (LAT. °N/ LONG. °E)	MAXIMUM SUSTAINED SURFACE WIND SPEED (KMPH)	CATEGORY OF CYCLONIC DISTURBANCE
18.05.21/1500	23.6/72.6	55-65 GUSTING TO 75	DEEP DEPRESSION
18.05.21/1800	24.2/73.0	50-60 GUSTING TO 70	DEEP DEPRESSION
19.05.21/0000	25.0/73.9	40-50 GUSTING TO 60	DEPRESSION

**REMARKS:**

AS PER INSAT-3D SATELLITE IMAGERY BASED ON 1500 UTC OF TODAY THE 18<sup>TH</sup> MAY 2021, THE ASSOCIATED VORTEX IS OVER LAND. ASSOCIATED BROKEN LOW AND MEDIUM CLOUDS WITH EMBEDDED INTENSE TO VERY INTENSE CONVECTION LAY OVER SOUTH GUJARAT, NORTH KONKAN, GULF OF CAMBAY AND ADJOINING EASTCENTRAL ARABIAN SEA AND MODERATE TO INTENSE CONVECTION OVER SOUTH RAJASTHAN, GULF OF KUTCH, SOUTH KONKAN, MADHYA MAHARASHTRA, NORTHWEST VIDARBHA, SOUTHWEST MADHYA PRADESH AND ADJOINING EASTCENTRAL & NORTHEAST ARABIAN SEA BETWEEN LATITUDE 18.0°N & 22.5°N AND EAST OF LONG 65.0E.

**PROBABILITY OF CYCLOGENESIS (FORMATION OF DEPRESSION)**

**NIL: 0%, LOW: 1-25%, FAIR: 26-50%, MODERATE: 51-75% AND HIGH: 76-100%**

THE ASSOCIATED MAXIMUM SUSTAINED WIND SPEED IS 35 KNOTS GUSTING TO 45 KNOTS. THE ESTIMATED CENTRAL PRESSURE IS 994 HPA.

THE LOW LEVEL CYCLONIC VORTICITY IS ABOUT  $200 \times 10^{-6} \text{ S}^{-1}$  AROUND SYSTEM CENTRE. LOW LEVEL CONVERGENCE IS ABOUT  $(20 \times 10^{-5} \text{ S}^{-1})$  AROUND THE SYSTEM CENTRE. POSITIVE UPPER LEVEL DIVERGENCE IS  $(10 \times 10^{-5} \text{ S}^{-1})$  AND LIES TO THE SOUTH OF THE SYSTEM CENTRE.. UPPER TROPOSPHERIC RIDGE RUNS ALONG  $23.0^{\circ}\text{N}$  AND LIES TO THE EAST OF THE SYSTEM CENTRE.

**THIS IS THE LAST TROPICAL CYCLONE ADVISORY BULLETIN FOR CYLONIC STORM "TAUKTAE". HOWEVER, TROPICAL WEATHER OUTLOOK FOR NORTH INDIAN OCEAN WILL CONTINUE.**

---

**TROPICAL WEATHER OUTLOOK FOR NORTH INDIAN OCEAN (THE BAY OF BENGAL AND ARABIAN SEA) VALID FOR NEXT 120 HOURS ISSUED AT 1500 UTC OF 18.05.2021 BASED ON 1200 UTC OF 18.05.2021.**

**BAY OF BENGAL:**

SCATTERED TO BROKEN LOW AND MEDIUM CLOUDS WITH EMBEDDED INTENSE TO VERY INTENSE CONVECTION LAY OVER SOUTHEAST BAY OF BENGAL (BOB), ADJOINING EQUATORIAL INDIAN OCEAN AND ANDAMAN SEA. SCATTERED LOW AND MEDIUM CLOUDS WITH EMBEDDED MODERATE TO INTENSE CONVECTION LAY OVER SOUTHWEST BOB.

**A LOW PRESSURE AREA IS LIKELY TO FORM OVER EASTCENTRAL BOB AROUND 23<sup>RD</sup> MAY, 2021.**

**PROBABILITY OF CYCLOGENESIS (FORMATION OF DEPRESSION) DURING NEXT 120 HRS:**

24 HOURS	24-48 HOURS	48-72 HOURS	72-96 HOURS	96-120 HOURS
NIL	NIL	NIL	NIL	NIL

**ARABIAN SEA:**

BROKEN LOW AND MEDIUM CLOUDS WITH EMBEDDED INTENSE TO VERY INTENSE CONVECTION LAY OVER GULF OF CAMBAY, EASTCENTRAL ARABIAN SEA OFF NORTH KONKAN COAST & NEIGHBOURHOOD BETWEEN LATITUDE  $18.0^{\circ}\text{N}$  &  $22.5^{\circ}\text{N}$  AND EAST OF LONG  $69.0\text{E}$ . SCATTERED LOW AND MEDIUM CLOUDS WITH EMBEDDED MODERATE TO INTENSE CONVECTION LAY OVER REST EASTCENTRAL & ADJOINING NORTHEAST ARABIAN SEA AND SOUTHEAST ARABIAN SEA.

**PROBABILITY OF CYCLOGENESIS (FORMATION OF DEPRESSION) DURING NEXT 120 HRS:**

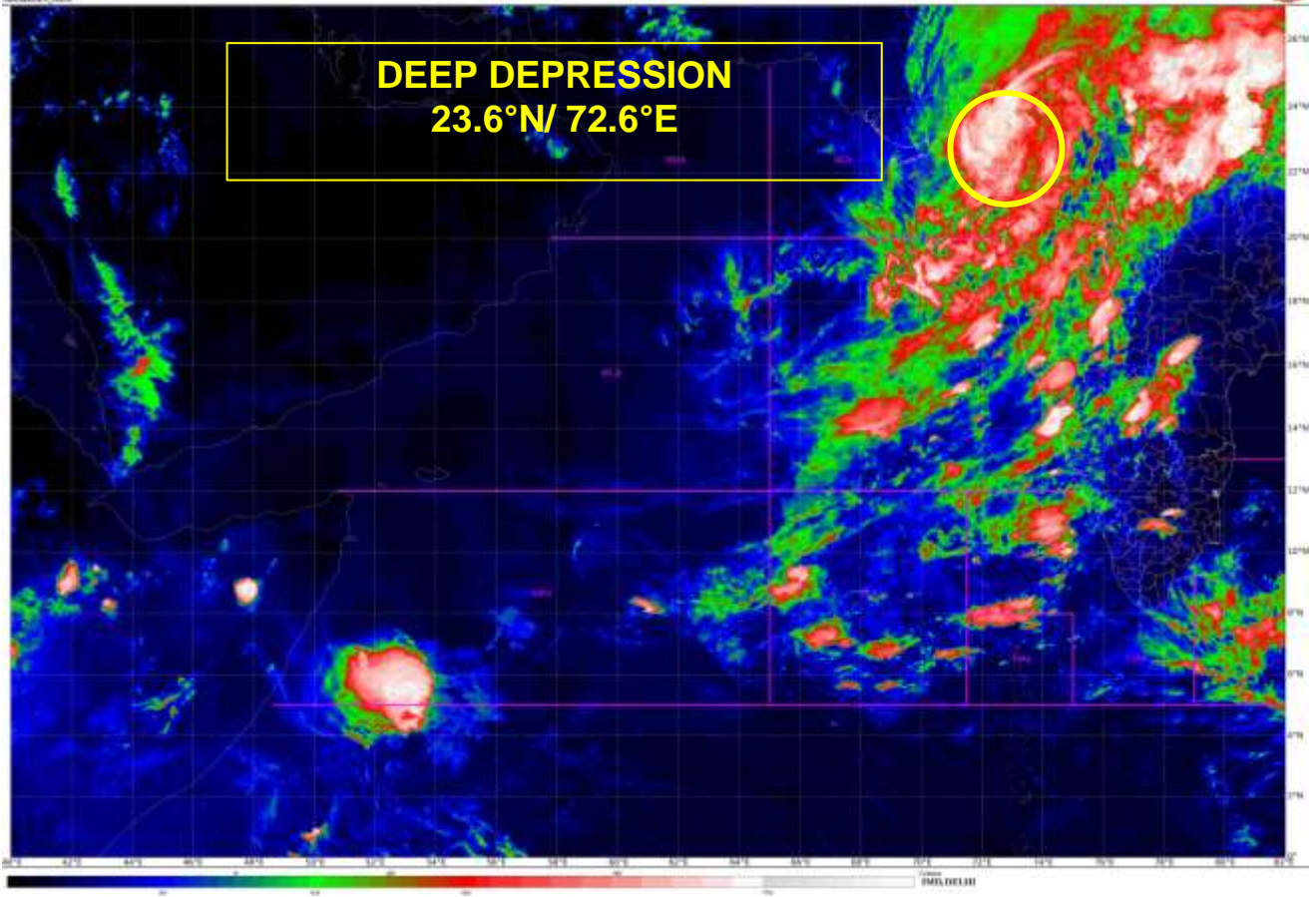
24 HOURS	24-48 HOURS	48-72 HOURS	72-96 HOURS	96-120 HOURS
NIL	NIL	NIL	NIL	NIL

(ANANDA KUMAR DAS)  
SCIENTIST-E  
RSMC, NEW DELHI

---

**PROBABILITY OF CYCLOGENESIS (FORMATION OF DEPRESSION)**

**NIL: 0%, LOW: 1-25%, FAIR: 26-50%, MODERATE: 51-75% AND HIGH: 76-100%**



---

**PROBABILITY OF CYCLOGENESIS (FORMATION OF DEPRESSION)**  
**NIL: 0%, LOW: 1-25%, FAIR: 26-50%, MODERATE: 51-75% AND HIGH: 76-100%**



# OBSERVED AND FORECAST TRACK ALONGWITH CONE OF UNCERTAINTY OF DEEP DEPRESSION REMNANTS OF "TAUKTAE" OVER GUJARAT REGION BASED ON 1500 UTC OF 18<sup>TH</sup> MAY, 2021



**DATE/TIME IN UTC**  
**IST=UTC + 0530**  
**L: LOW PRESSURE AREA**  
**WML: WELL MARKED LOW PRESSURE AREA**  
**D: DEPRESSION (17-27 KT)**  
**DD: DEEP DEPRESSION (28-33 KT)**  
**CS: CYCLONIC STORM (34-47 KT)**  
**SCS: SEVERE CYCLONIC STORM (48-63KT)**  
**VSCS: VERY SEVERE CYCLONIC STORM (64-89 KT)**  
**ESCS: EXTREMELY SEVERE CYCLONIC STORM (90-119 KT)**  
**SuCS: SUPER CYCLONIC STORM (≥ 120 KT)**

- LESS THAN 34 KT
- 34-47 KT
- ≥ 48 KT
- OBSERVED TRACK
- FORECAST TRACK
- CONE OF UNCERTAINTY

## PROBABILITY OF CYCLOGENESIS (FORMATION OF DEPRESSION)

NIL: 0%, LOW: 1-25%, FAIR: 26-50%, MODERATE: 51-75% AND HIGH: 76-100%



# OBSERVED AND FORECAST TRACK ALONGWITH QUADRANT WIND DISTRIBUTION OF DEEP DEPRESSION REMNANTS OF "TAUKTAE" OVER GUJARAT REGION BASED ON 1500 UTC OF 18TH MAY, 2021



DATE/TIME IN UTC

IST=UTC + 0530

L: LOW PRESSURE AREA

WML: WELL MARKED LOW PRESSURE AREA

D: DEPRESSION (17-27 KT)

DD: DEEP DEPRESSION (28-33 KT)

CS: CYCLONIC STORM (34-47 KT)

SCS: SEVERE CYCLONIC STORM (48-63KT)

VSCS: VERY SEVERE CYCLONIC STORM (64-89 KT)

ESCS: EXTREMELY SEVERE CYCLONIC STORM (90-119 KT)

SuCS: SUPER CYCLONIC STORM ( $\geq$  120 KT)

● LESS THAN 34 KT

○ 34-47 KT

●  $\geq$  48 KT

— OBSERVED TRACK

— FORECAST TRACK

— CONE OF UNCERTAINTY

AREA OF MAXIMUM SUSTAINED WIND SPEED:

■ 28-33 KT (52-61 KMPH)

■ 34-49 KT (62-91 KMPH)

■ 50-63 KT (92-117 KMPH)

■  $\geq$  64 KT ( $\geq$  118 KMPH)

### IMPACT OVER THE SEA

MSW (knot/kmph)	Impact	Action
28-33 (52-61)	Very rough seas	Total suspension of fishing operations
34-49 (62-91)	High to very high seas	Total suspension of fishing operations
50-63 (92-117)	Very high seas	Total suspension of fishing operations
$\geq$ 64 ( $\geq$ 118)	Phenomenal	Total suspension of fishing operations

### PROBABILITY OF CYCLOGENESIS (FORMATION OF DEPRESSION)

NIL: 0%, LOW: 1-25%, FAIR: 26-50%, MODERATE: 51-75% AND HIGH: 76-100%